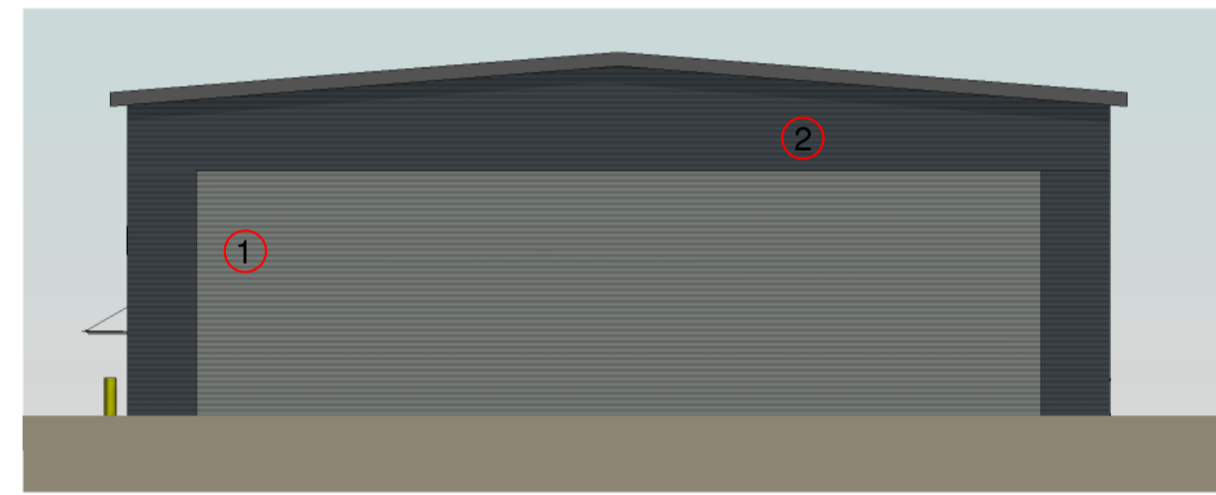


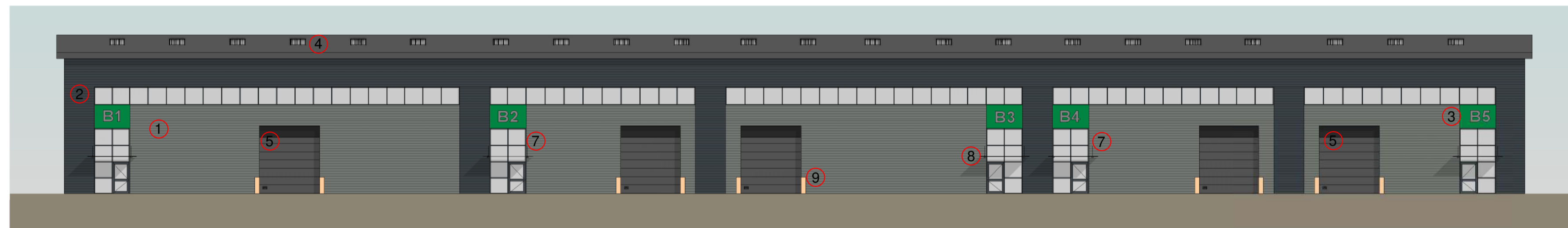


1 North  
1 : 200

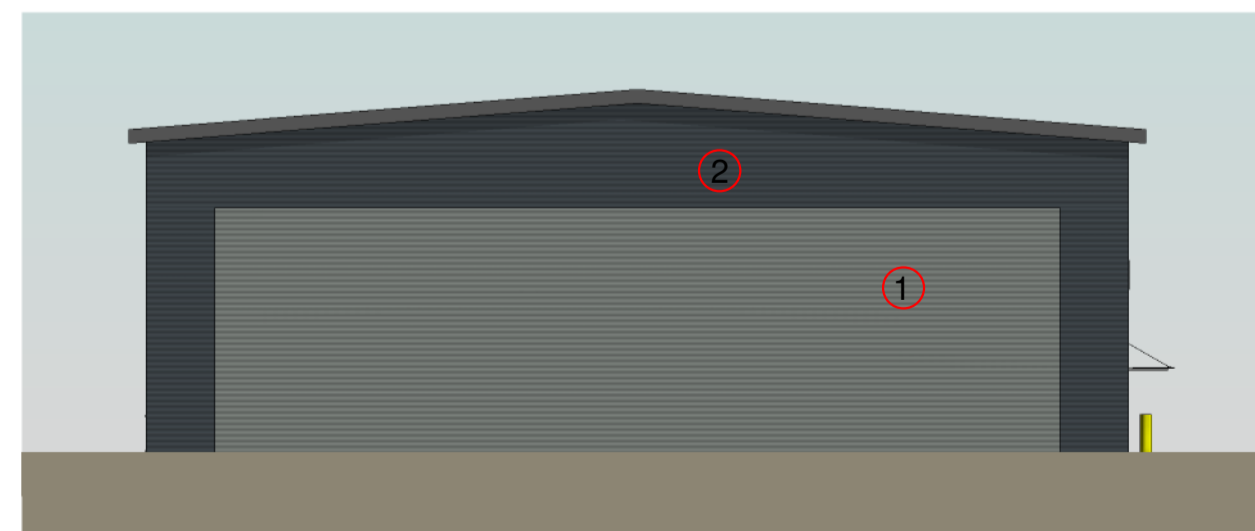


2 East  
1 : 200

- 1 - PROFILED CLADDING, COLOUR: GOOSEWING GREY (RAL: 7038)
- 2 - PROFILED CLADDING, COLOUR: MERLIN GREY (RAL: 180 40 05)
- 3 - PROFILED CLADDING, COLOUR: CHANCERYGATE GREEN (RAL TBC)
- 4 - TRIPLE SKIN NON-FRAGILE ROOFLIGHT
- 5 - INSULATED PANEL DOOR, 4.0m WIDE x 4.5m HIGH, COLOUR: ANTHRACITE (RAL 7016)
- 6 - INSULATED METAL PERSONNEL DOOR, COLOUR: ANTHRACITE (RAL 7016)
- 7 - CURTAIN WALLING/SHOPFRONT/RIBBON WINDOWS, FRAME COLOUR: ANTHRACITE (RAL: 7016)
- 8 - ENTRNACE CANOPY, STRUCTURE COLOUR: ANTHRACITE (RAL: 7016)
- 9 - BOLLARDS, COLOUR: YELLOW (RAL: TBC)



3 South  
1 : 200



4 West  
1 : 200

Chancerygate 

**Stephen George  
+ Partners LLP**

Architects + Masterplanners  
33 Park Place  
Leeds LS1 2PY  
t: +44 (0)113 246 7969  
[www.stephengeorge.co.uk](http://www.stephengeorge.co.uk)

HOUSTOUN BUSINESS PARK  
LIVINGSTON  
UNIT B

Elevations

CDE Reference:	PRJ-SGP-A-P202-B		
Drawing Status:	PRELIMINARY		
Model Reference:	16-006-Unit B		
Drawn:	SRC		
Team:	Leeds		
Date:	JUNE 2017		
Scale:	1 : 200@A1		
Project:	Dwg no:	Status:	Rev:
16-006	P202	B	